

In this Edition

Welcome

Progress

- Bulford
- Larkhill
- Ludgershall

Meet some of the Team

- Martin Mills
- Rob Bartlett

Community Matters

Property Designs

Useful Links

Welcome

Welcome to the fourth edition of Plain Speaking.

It's been just over a year since Lovell were appointed as the Preferred Contractor for the delivery of 917 Service Families Accommodation (SFA) on Salisbury Plain under the Army Basing Programme (ABP). It's been a fast and busy year for us but by establishing a strong team here on Salisbury Plain and by working closely with the ABP, necessary pre commencement works are almost complete. We currently expect to take possession of the three SFA sites in November and work will proceed simultaneously on all three developments.



Aerial shots of the three sites L-R, Bulford, Larkhill and Ludgershall.

In preparation for the construction phase we are currently procuring a robust Supply Chain of sub-contractors that we believe will provide excellent products and services and help us meet our client's expectations.

As the build progresses we will continue to attend local Area Board meetings to provide updates and answer the public's questions. Together with our colleagues in the ABP and Wiltshire Council we are also continuing to contribute to regular travel bulletins and information for local communities.

I have recently taken up responsibility for this publication and will endeavour to carry on the good work of my predecessor, Dawn Harrison, by keeping you updated and informed of project development and local news, in this quarterly newsletter.

Best wishes,



Jessica Wheatley
Community Relations Manager

PLAIN SPEAKING

Progress

Bulford

Early November will see the relocation of the existing spoil heaped across the development, left over from the archaeological and ordnance survey works.

The first stages of our Road and sewer construction programme will begin around the turn of the year, with the two entrances to the developments, Bulford Road and Double Hedges Road, being the first priority.

Following this, establishment of our compound and car parking areas will ensue throughout January 2018.

Larkhill

The road closure to The Packway is now lifted with 2-way traffic once again flowing, albeit under signal control.

This leaves our three remaining phases of Highways construction to The Packway, to be completed by the end of the year.

Work proceeds to the access road (School Road), to the St. Michael's School development with the road due to complete in January 2018.

Work will commence on site with a large earth moving operation, and the concluding surveys of the tunnel/trench network on the western facet of the site, followed by ground profiling ahead of road and sewer construction.

Ludgershall

The first operation of this site is to conduct a large ground remediation exercise which follows the demolition and site clearance of the former Corunna Barracks. Large tracts of the development area will be excavated and removed and subsequently replenished with clean fill. All of this operation is undertaken with the support of the Environmental Agency.

Following this, our road and sewer construction programme will begin in the New Year with the formation of the two entrances to the development along Tidworth Road.

Meet the Team

Martin Mills



Martin joined us as our Project Manager for the Larkhill site in April 2017. He came to us from Bovis Homes where he worked as a Build Director for public and private housing developments.

Martin has a keen interest in motorsport and in his spare time enjoys watching Gloucester rugby matches.

Rob Bartlett



Rob joined the Salisbury Plain team in January 2017 as one of our two Senior Quantity Surveyors for the project. Rob has been a Surveyor with Lovell for 13 years and came to us from a refurbishment project in Dudley.

Rob has an interest in cricket and football and is a keen Aston Villa supporter. In his spare time Rob coaches his son's football team.

Community Matters



The new war memorial, Tidworth.

In September Tidworth's new war memorial was revealed, its unveiling was accompanied by music from The Royal Artillery Band and Military Wives Choir.

The memorial consists of a central granite spire representing the churches in the town, surrounded by granite monoliths with engravings of Tidworth's history from the First World War to present day.

The memorial is a result of local community fundraising, sponsors and grants. It will be a key focal point for the town and will serve as official commemoration to those who lost their lives in WW1.

Locals to the area will be familiar with the site of the Bulford Kiwi that sits on the side of Beacon Hill, Salisbury Plain. It was constructed in 1919 by New Zealand soldiers who were stationed at Sling Camp (part of Bulford Camp no longer in existence) during WW1. It has now been granted protected status as a monument by Historic England, this means we can hope to see the memory of the soldiers be kept alive by way of the Kiwi being re-chalked and maintained.



The view of Bulford Kiwi, Beacon Hill.

Our sister company Morgan Sindall have begun work constructing the new St. Michael's School at Larkhill. The two storey school is being built to help accommodate children from the existing St. Michael's primary school in Figheldean and the children who will be moving to the area under the ABP. The construction is due to be finished by summer 2018.



St. Michael's School build progress, Larkhill.

Property Designs

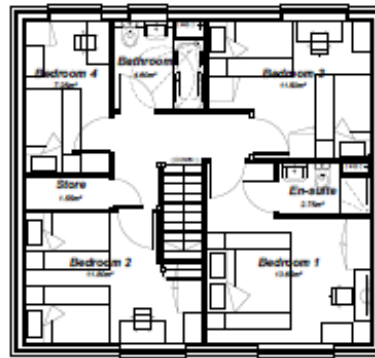
In our last edition of Plain Speaking we showed the proposed layout for the Type C (Soldiers' accommodation) properties. The plans below show the proposed layout for Type D (Soldiers' accommodation), these properties will have four bedrooms.

The gross areas of the Type D properties (including storage) are:

- Detached - 145m²
- Semi-detached - 144.6m²



Ground Floor



First Floor

Each property will be built according to the MOD's current requirements for Officers' and Soldiers' accommodation.

The suite of designs include bungalows and a proportion of adapted properties for families with specific needs. These properties will be accessible to wheelchair users. Each property will have its own allocated garage either within the curtilage of the property or with an adjacent block of garages.

Useful Links

- Lovell: <http://www.lovell.co.uk/>
- Morgan Sindall: <https://www.morgansindall.com/>
- Defence Infrastructure Organisation (DIO): <https://www.gov.uk/government/organisations/defence-infrastructure-organisation>